

Duragauge pressure gauge, solid front Model 1279, 1377, 1379 and 2462

According ASME B40.1

Nominal size 4 1/2, 6 and 8 1/2 inch

Accuracy: Grade 2A (0,5%)

Features

- Rugged construction
- Protection IP54 or IP65
- Usable to full scale
- Overload protection 130%
- Dry or liquid filled
- Measuring system brass, stainless steel or Monel

Ranges

-1 ... 0 bar up to 0 ... 7000 bar

-30 in. Hg ... 0 psi up to 0 ... 100.000 psi

Applications

Chemical and petrochemical industry

Machine and apparatus construction

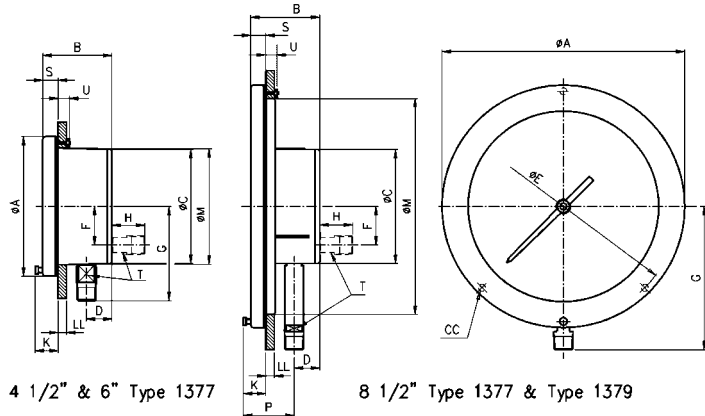
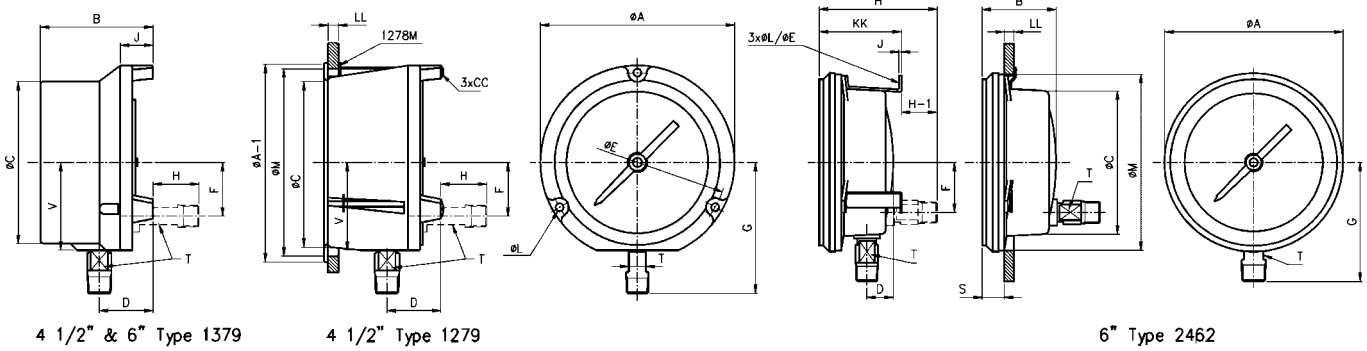
Food and beverage industry

Pulp and paper industry



Technical specification	1279	1379				1377			2462																
Dial size [inch]	4 1/2	4 1/2	6	8 1/2	4 1/2	6	8 1/2	6																	
Construction housing ring	Solid front safety pattern with blow out at the back				Hinged			Bayonet																	
Measuring principle	Bourdon tube																								
Range [bar]	0,6	1	1,6	2,5	4	6	10	16	25	40	60	100	160	250	400	600	1000	1600							
High pressure [bar] (6 inch only)	-1/0	-1/0,6	-1/1,5	-1/3	-1/5	-1/9	Receiver 0,2/1			2500				4000				6000				7000			
Overpressure limit	130% F.S., short time																								
Pressure type	Gauge, vacuum and compound																								
Process connection	G 1/4 B male, G 1/2 B male, M20x1,5 male																								
Connection location	Lower, back																								
Material	Brass, stainless steel 316L (1.4404) or Monel																								
Pressure connection	Bronze, stainless steel 316L (1.4404) or Monel																								
Tube	Phenolic																								
Case	Aluminum, black epoxy coated																								
Ring	Polypropylene				Steel enamel coated			Polypropylene																	
Window	Instrument glass, optional laminated safety glass or acrylic glass (standard for high pressure)																								
Dial	Aluminum, black markings on white background																								
Pointer	Aluminum, black, micrometer adjustment, red set hand or maximum pointer																								
Movement	Stainless steel 400 series, stainless steel Teflon coated pinion gear and segment																								
Accuracy	Grade 2A (0,5% F.S.)																								
Permissible	-25 ... 60°C, liquid filled -45 ... 120°C																								
Ambient temperature	max. 120°C																								
Medium temperature	-40 ... 65°C																								
Storage temperature	max. 0,3% / 10 K																								
Effect	IP54 (dry), IP65 (liquid filled), optional IP65 for dry gauges																								
Protection according EN 60 529/IEC 529	Glycerin, silicone, halocarbon, others on request																								
Filling liquids	Optional dampened movement (liquid less gauge), functions as liquid filled gauge (PLUS! gauge)				Filling not available																				
Mounting	Stem, surface, optional flush				Stem, flush			Stem, flush, optional surface																	
Weight dry/filled [kg]	1,1/1,5	1,1/1,5	1,4/2	2/2,6	1,1/-	1,4/-	2/-	1,1/-																	
Accessories, options	Diaphragm seals, valves, gauges with contacts, gauges with electric output, NACE																								

General dimensions [mm]



Type	ø	A	B	C	D	E	F	G	H	J	L	T	V
1279	4 1/2"	148	86	129	41	137	41	100	20	25	6	16	67

Type	ø	A	B	C	D	E	F	G	H	J	K	L	P	S	T	V	CC	LL
1379	4 1/2"	148	86	124	41	137	42	100	20	27	-	6	-	-	16	67	-	-
	6"	192	89	162	41	178	42	114	35	-	27	-	54	17	-	-	#10-24	3-13
	8 1/2"	256	73	121	27	244	41	152	35	-	27	-	54	17	-	-	#10-24	3-13

1278M	ø	A-1	M	CC	LL
1279	4 1/2"	152	143	#10-24	3-8
1379	4 1/2"	152	143	#10-24	3-8
	6"	197	184	1/4-20	3-8

Type	ø	A	B	C	D	E	F	G	H	K	M	P	S	T	U	CC	LL
1377	4 1/2"	148	-	-	-	137	-	100	-	-	124	-	-	-	-	#10-24	-
	6"	192	73	121	27	178	41	114	35	27	165	-	-	16	16	19	1/4-20
	8 1/2"	256	-	-	-	244	-	152	-	-	229	54	-	16	16	19	1/4-20

Type	ø	A	B	C	D	E	F	G	H	H-1	J	KK	L	LL	M	S	T
2462	6"	163	62	120	22	137	42	100	105	36	2	69	6	2-13	152	17	16

Rev. F

Order information

Size	Type	System material	Execution	Process connection	Connection orientation	Range	Engineering units	Filling liquid	Options
(45) 4 1/2 inch (115 mm) ¹⁾	1279	(A) Brass socket, bronze tube ¹⁾	(S) Solid front IP54	(04) 1/2 NPT male ¹⁾	(L) Lower	-1/ 0 -1/ 1,5	(BAR)	(=) Standard no filling	(NH) Tagging wired
(60) 6 inch (150 mm) ²⁾	1379	(S) 316L (1.4404) ²⁾	(SH) Hermeti- cally sealed IP65, field fillable ¹⁾	(02) 1/4 NPT male ²⁾	(B) Back	-1/ 3 -1/ 5 -1/ 9		(GV) Silicone	(TX) Throttle screw stainless steel (not for process connection 09)
(85) 8 1/2 inch (215 mm) ³⁾	2462	(P) Monel 400 socket, K-Monel 500 tube ²⁾	(SL) Liquid filled IP65 ¹⁾	(09) 9/16-18 UNF-2B Aminco (standard for high pressure)		0/ 0,6 0/ 1 0/ 1,6 0/ 2,5 0/ 4 0/ 6 0/ 10 0/ 16 0/ 25 0/ 40 0/ 60 0/ 100 0/ 160 0/ 250 0/ 400 0/ 600 0/ 1000 0/ 1600 0/ 2500 0/ 4000 0/ 6000 0/ 7000		(GV3) Silicone 3 cst	(6B) Oxygen service
		(WW) 316 (1.4401) socket, inconel 718 tube ³⁾		(13) G 1/4 B male ²⁾				(HA) Halo- carbon	(EP) Maximum pointer adjustable
				(15) G 1/2 B male ¹⁾				(GR) Glycerin	(PD) Acrylic glass
				(16) M20x1,5 male ¹⁾					(SG) Safety glass
									(SH) Red set hand stationary
									(LL) Liquid less gauge (PLUS! gauge) (not for process connection 09)
									(PR) Receiver gauge
									(1278M) Flush mounted ring for 4 1/2" and 6" type 1279 and 1379

How to order

Size	Type	System material	Execution	Process connection	Connection orientation	Range	Engineering unit	Filling liquid	Option
45	1279	S	SL	15	L	0/16	BAR	GR	NH