

Flanged Thermowells

Model SF, RF and HF

According ANSI/ASME or DIN 43772

Features

- Solid bore construction
- Materials according NACE MR 01-75
- Selection of materials
- Standard and customer specifications
- DIN and ANSI/ASME process connections

Ratings

DIN up to PN100

ANSI/ASME up to 2500 lbs

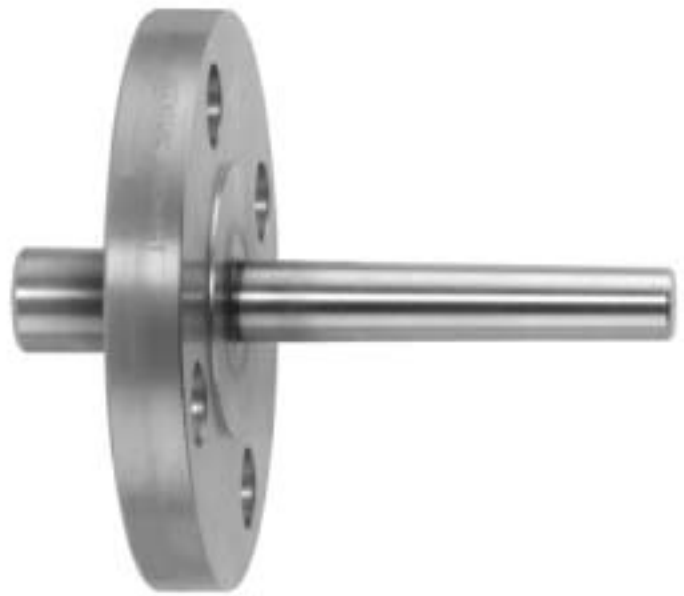
Applications

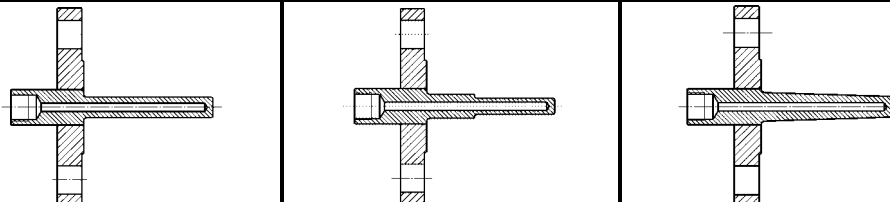
Chemical and petrochemical industry

Machine and apparatus construction

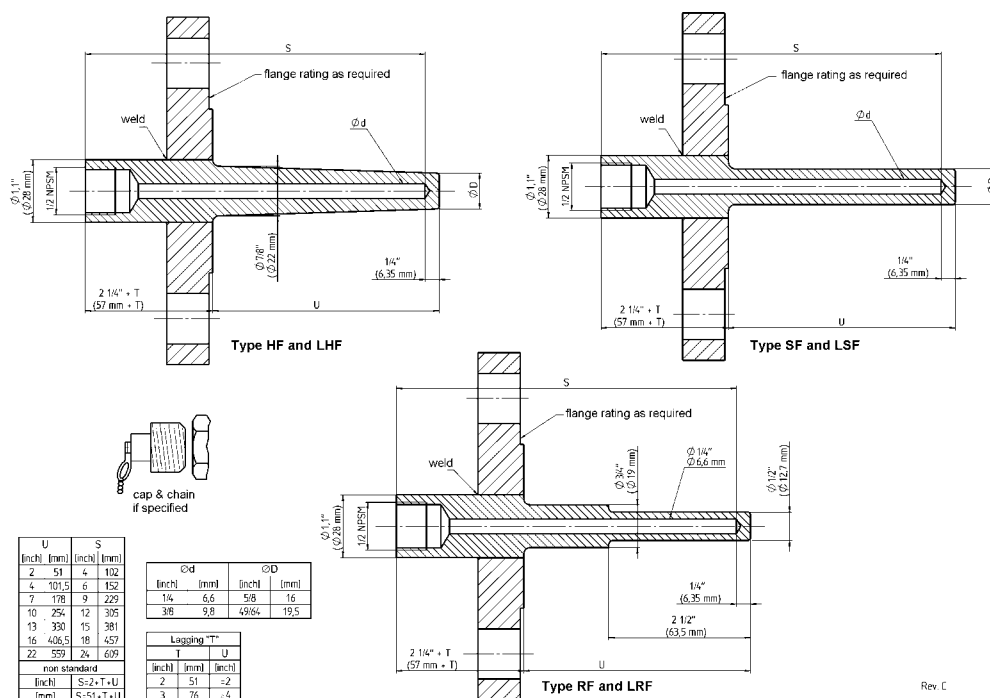
Food and beverage industry

Pulp and paper industry



Technical specification	SF	LSF	RF	LRF	HF	LHF
Solid bore design	 <p>Shank solid bore, flange welded on shank standard. Optional one piece design, built up design or to customer specification</p>					
Construction shank	Straight		Stepped		Tapered	
Lagging	No Yes		No Yes		No Yes	
Standard lengths	3" (75 mm), others on request					
Standard U-length [inch]	2	4	7	10	13	16
[mm]	51	101,5	178	254	330	406,5
	Optional to customer specification					
Bore diameter [inch]	0,260	0,385 ¹⁾				
[mm]	6,6	8,5 ¹⁾	9,8 ¹⁾	10,5 ¹⁾		¹⁾ not for types RF and LRF
	Others on request, see coding table					
Pressure rating	Depending on flange rating					
Process connection						
DIN	DN25, DN40, DN50, DN80, DN100, others on request					
Size	PN10, PN16, PN25, PN40, PN64, PN100, others on request					
Pressure class						
ANSI/ASME	1, 1½, 2, 3, 4, others on request					
Size [inch]	150, 300, 600, 900, 1500 ¹⁾ , 2500 ¹⁾					
Pressure class [lbs]	RF (raised face) ¹⁾ , FF (flat face) ²⁾ , RTJ (ring joint type)					
Facing	Other forms, connections or standards are available on request					
Instrument connection	½ NPSM female standard, optional ½ NPT female or G ½ female					
Material	Stainless steel 304 (1.4301), 304L (1.4306), 316 (1.4401), 316L (1.4404), 316Ti (1.4571) Monel, Hastelloy B, Hastelloy C, Inconel, Tantalum, Duplex, Nickel Other Materials or coatings on request					
Certifications & tests	Material certificate DIN EN 10 204 3.1B, Hydrostatic test, dye penetration test, X-ray, Hardness test, NACE certificate, stress calculation according Murdock					
Accessories, options	Thermometers, Pt-100, thermocouples					

General dimensions [inch (mm)]



Rev C

Order information

Process connection	U-length	Instrument connection	Lagging	Type	Bore	Material ¹⁾	Pressure rating	Flange facing	Options
(10) 1" (DN25)	Inch dimension	All connections are female	(=) No lagging	(HF) Standard with Welded Flange Tapered Shank	Inch dimensions	(C) 304 (1.4301)	ANSI Flange	ANSI Flange	(NH) Tagging stamped
(15) 1 1/2" (DN40)	(0200) 2" (0400) 4" (0700) 7"	(=) 1/2 NPSM (50) 1/2 NPT (51) G 1/2	(L) With lagging (standard 3" (75mm), other lengths to be specified in [inch] or [mm])	(SF) Welded Flange Straight Shank	(260) 0,260" (6,6 mm) (385) 0,385" ¹⁾ (9,8 mm)	(CL) 304L (1.4306) (S) 316 (1.4401)	150 300 600 900 1500 2500	(RF) Raised face ¹⁾ (FF) Flat face ²⁾	(BP) Buffed and polished (FL.) Specify flange as per material code (e.g. FLM flange material Monel)
(20) 2" (DN50)	(1000) 10" (1300) 13" (1600) 16" (2220) 22"			(RF) Welded Flange Stepped Shank (only bore 0,260 (6,6mm))	Others on request	(SL) 316L (1.4404) (M) Monel (H) Hastelloy C		(RTJ) Ring joint type	(CDNC) NACE certificate MR 01-75 (CDW2) Dye penetration test
(30) 3" (DN80)					MM dimension (... mm)	(N) Nickel (DU) Duplex		DIN flange	(CDRH) Rockwell hardness test
(40) 4" (DN100)	MM dimension (... mm) length in mm				Standard available 6,6 mm 8,5 mm ¹⁾ 9,8 mm ¹⁾ 10,5 mm ¹⁾			DIN flange	(X-RAY) X-ray photo
Others on request	Others on request	Others on request		Other construction such as: Solid machined, built up and to customer specification on request	¹⁾ not for type SM, LSM, RT and LRT	¹⁾ Flange material is the same as the shank material unless specified with code (FL.), see options		PN10 PN16 PN25 PN40 PN64 PN100	Material certificates acc. DIN EN 10 204 (CD2) 2.2 (CD3) 3.1B Hydrostatic internal pressure test (CDW9) 100 bar 1 min. (CDW4) To customer specification
					Others on request	Others on request		Others on request	

How to order

Process connection	Type	U-length	Instrument connection	Lagging	Shank type	Bore diameter	Material	Pressure rating	Flange facing	Options
10	W	0200	=	L	HF	260	SL	150	RF	2